

KECKLEY

No Question. We Have the Answers.

KECKLEY COMPANY
3400 Cleveland Street P.O. Box 67
Skokie, IL 60076
800-KECKLEY (800.532.5539)
847.674.8422
FAX 847.674.2106
email: sales@keckley.com
website: www.keckley.com

Established 1914

Ball Valves



Seal Welded
 *Style BVS2
 2160 W.O.G.
 R-PTFE Seats
 Sizes 1/4" - 4"



Seal Welded
 *Style BVSC
 Class 900 (2160 PSIG)
 R-PTFE Seats
 Sizes 1/4" - 2"



Seal Welded
 *Style BVS3
 Class 1500 (3600 PSIG)
 Delrin AF Seats
 Sizes 1/4" - 2"



Seal Welded
 *Style BVS6
 Class 2500 (6000 PSIG)
 PEEK Seats
 Sizes 1/4" - 2"



Unibody Flanged
 *Style BVF1
 Class 150 & 300
 R-PTFE Seats
 Sizes 1/2" - 6"



Split-Body Flanged
 *Style BVF2
 Class 150 & 300
 R-PTFE Seats
 Sizes 1/2" - 8"

*Body/Trim Material: CS w/ 316SS Trim or CF8M w/ 316SS Trim.

†Available End Connections: NPT Ends, Socket Weld Ends, Socket Weld x FNPT Ends, or MNPT x FNPT Ends.

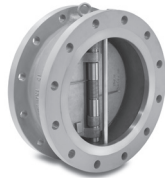
Check Valves



3-Piece Maintenance Design
 *Style BVM3
 Class 800
 1920 W.O.G.
 R-PTFE Seats
 Sizes 1/4" - 2 1/2"



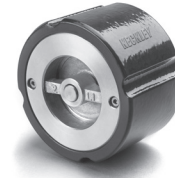
Double Disc Cast Iron
 *Carbon Steel
 *316 Stainless Steel
 Style DD
 125# - 1500#
 Sizes 2" - 48"



Double Flange Body
 *Carbon Steel
 *316 Stainless Steel
 Style DF (Flange)
 150# - 1500#
 Sizes 2" - 48"



Lug Body
 *Carbon Steel
 *Stainless Steel
 Style DL (Lug Style)
 150# - 1500# Flanged
 Sizes 2" - 48"



Wafer Center Guided
 Cast Iron
 Carbon Steel
 316 Stainless Steel
 Style CW
 125# - 300#
 Sizes 2" - 12"



Globe Center Guided
 Cast Iron
 Carbon Steel
 316 Stainless Steel
 Style CG
 125# - 300#
 Sizes 2" - 24"

*All Cast Carbon Steel and Cast 316 Stainless Steel Body Double Disc Check Valves are Retainerless Design.

Y-Strainers



Cast Iron
 Style B / Style B7
 250# Threaded
 Sizes 1/4" - 4"
 (Style B7 Sizes 1/4" - 3")



Cast Iron
 Style A-7
 125 # & 250# Flanged
 Sizes 2" - 24"



Cast Ductile Iron
 Style BDI
 250# Threaded
 Sizes 1/2" - 2"



Cast Bronze
 Style F-150
 125# Threaded
 Sizes 1/4" - 3"



Cast Bronze
 Style E-150
 125# Solder Joint
 Sizes 1/4" - 3"



Cast Bronze
 Style F-300
 250# Threaded
 Sizes 1/4" - 3"



Cast Bronze
 Style E-300
 250# Solder Joint
 Sizes 1/4" - 3"



Cast Bronze
 Style BA-7
 150# & 300# Flanged
 Sizes 1/2" - 12"



Cast Carbon Steel
 Style SB-7 / SB-7BC
 600# Threaded or
 600# Socket Weld
 Sizes 1/4" - 3"



Cast Carbon Steel
 Style SB
 1500# Threaded or
 1500# Socket Weld
 Sizes 1/2" - 3"



Cast Carbon Steel
 Style SA-7
 150# & 300# Flanged
 Sizes 1/2" - 24"



Cast Carbon Steel
 Style SA-7
 150# & 300# Butt Weld
 Sizes 1/2" - 24"



Cast Carbon Steel
 Style SA
 600# Flanged or
 Butt Weld
 Sizes 1/2" - 24"



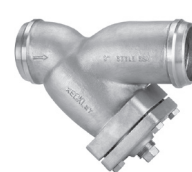
Cast 316 Stainless Steel
 Style SSB-7 / SSB-7BC
 600# Threaded or
 600# Socket Weld
 Sizes 1/4" - 3"



Cast 316 Stainless Steel
 Style SSB
 1500# Threaded or
 1500# Socket Weld
 Sizes 1/2" - 3"



Cast 316 Stainless Steel
 Style SSA-7
 150# & 300# Flanged
 Sizes 1/2" - 24"



Cast 316 Stainless Steel
 Style SSA-7
 150# & 300# Butt Weld
 Sizes 1/2" - 24"



Cast 316 Stainless Steel
 Style SSA
 600# Flanged or
 Butt Weld
 Sizes 1/2" - 24"

Basket Strainers



Cast Iron
Style KT-7
125# Threaded
Sizes ¾" - 3"



Cast Iron
Style D
125# & 250# Flanged
Sizes 2" - 12"



Cast Iron
Style GFV
125# & 250# Flanged
Sizes 2" - 24"



Cast Iron
Style GFV-K
125# Flanged
Sizes 2" - 16"



Cast Ductile Iron
Style KF-7
125# Flanged
Sizes 1½" - 12"



Cast Bronze
Style BKF-7
150# Flanged
Sizes 1½" - 12"



Cast Bronze
Style BGFV
150# & 300# Flanged
Sizes 2" - 12"



Cast Carbon Steel
Style SD / SD-K*
150# & 300# Threaded
Sizes ¼" - 3"



Cast Carbon Steel
Style SD
150# & 300# Flanged
Sizes 2" - 12"



Cast Carbon Steel
Style SGFV / SGFV-K*
150# & 300# Flanged
Sizes 1½" - 14"



Cast 316 Stainless Steel
Style SSD / SSD-K*
150# & 300# Threaded
Sizes ¼" - 3"



Cast 316 Stainless Steel
Style SSGFV / SSGFV-K*
150# & 300# Flanged
Sizes 1½" - 14"

*Units with knob type covers are available in 150# class only.

Duplex Strainers



Cast Iron
Cast Bronze
Cast Carbon Steel
Cast 316 Stainless Steel
Threaded
Sizes ¾" - 2½"



Cast Iron
Cast Bronze
Cast Carbon Steel
Cast 316 Stainless Steel
Flanged
Sizes 1" - 8"



Cast Iron
Cast Bronze
Cast Carbon Steel
Cast 316 Stainless Steel
Flanged
Sizes 10" - 20"



Fabricated
Copper Nickel
Carbon Steel
Stainless Steel
150# - 600# Flanged
Sizes 6" - 24"

Duplex Options:



Differential Pressure Indicators



DIN Electrical Probes

Fabricated Strainers



Fabricated - "Y"
Carbon Steel - FSA
Stainless Steel - FSSA
150# - 1500#
Flanged or Butt Weld
Sizes 4" - 30"



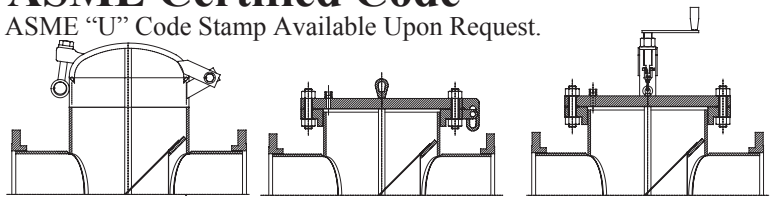
Fabricated - Basket
Carbon Steel - FB
Stainless Steel - FB
150# - 1500#
Flanged or Butt Weld
Sizes 4" - 30"



Fabricated - Tee
Carbon Steel - T
Stainless Steel - T
150# - 600#
Flanged or Butt Weld
Sizes 2" - 30"

ASME Certified Code

ASME "U" Code Stamp Available Upon Request.



Quick Open Cover
Style FB-Q

Bolted Slide Hinge Cover
Style FB-H

Integral Davit Swing Arm
Style FB-D

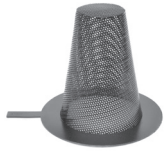
Special Options on Fabricated Strainers

- Differential Pressure Gauges
- Custom Blowdown Connections
- Custom Nozzle Positions
- Custom Basket Configurations
- Custom Venting & Special Drains
- Custom Floor Stands
- Special Coating & Galvanizing
- Custom Mounting Hardware
- Oversized Bodies

Temporary Strainers



Fabricated - Cone
Carbon Steel
Stainless Steel
Style TC
150# - 600# Flanged
Sizes 1½" - 24"



Fabricated - Basket
Carbon Steel
Stainless Steel
Style TB
150# - 600# Flanged
Sizes 1½" - 24"



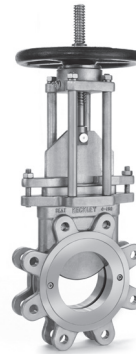
Fabricated - Plate
Carbon Steel
Stainless Steel
Style TP
150# - 600# Flanged
Sizes 1½" - 24"

Line Blind



Fabricated
Carbon Steel - FLB
Stainless Steel - FLB
150# - 1500# Flanged or
Butt Weld
Sizes 1" - 24"

Knife Gate Valves



Options:

- Manual (Handwheel) 2" to 24"
- Bevel Gear Actuation from 2" to 24"
- Air and Hydraulic Cylinder Actuation from 2" to 24"
- Fabrication through 48" diameter
- Uni-Directional or Bi-Directional
- Body Material - Carbon Steel, 304 SS, 316 SS, Special Alloys
- Seat Material - Metal, PTFE, Viton, EPDM, Buna

Pump Accessories



Cast Iron
Style PSD (Suction Diffuser)
125# Flanged
Sizes 2" x 1½" - 20" x 20"



Cast Iron
Style TDV (Triple Duty Valve)
125# Flanged
Sizes 2" - 20"

Float & Lever Valves

All Available - Angle or Globe Pattern - Screwed or Flanged.



Bronze, Cast Iron, &
316 SS body & trim.
Double Seated
(Non Tight Closing)
Type 27
Sizes ½" - 12"



Bronze, Cast Iron, &
316 SS body & trim.
Single Seated
(Tight Closing)
Type 7
Sizes ½" - 2"



Bronze or Cast Iron body
Bronze trim.
Single Seated
(Tight Closing)
Type 77
Sizes 2" - 10"



Bronze, Cast Iron, &
316 SS body & trim.
Double Seated
(Non Tight Closing)
Type 62
Sizes ½" - 12"

Control Valves



Bronze - Type AA
SS Trim - Steam Service
Nylon Trim - Air Service
For reduced pressure
above 40 PSI.
Threaded or Flanged
Sizes ½" - 6"



Bronze - Type AR
SS Trim - Steam Service
Nylon Trim - Air Service
For reduced pressure
below 40 PSI.
Threaded or Flanged
Sizes ½" - 6"



Bronze
Composition Disc (Single Seated)
Water, Oil, Air or Gas
Type 10
Threaded
Sizes ½", ¾", 1"



Cast Iron
Bronze or SS Trim
Steam, Air, Gas, or Liquid
Type 11A
250# Threaded
Sizes ¾" - 2"



Bronze & Cast Iron
Bronze or SS Trim
Direct or Reverse Acting
Type 114, 114R, 119, 119R
Threaded or Flanged
Sizes ½" - 12"

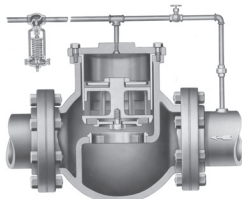


Bronze
SS Trim
Steam or Air
Type D
Threaded
Sizes ¼" - 1"

Control Valves(cont.)



Bronze & Cast Iron
Bronze Trim
Water or Air
Type 700
Threaded or Flanged
Sizes ½" - 4"



Cast Iron
Bronze Trim
Water Service, External Pilot
Type 701
Threaded or Flanged
Sizes 2" - 10"



Bronze
Bronze Trim
Steam (3% or 10% accum.)
or Air Service
Type 40
Threaded
Sizes ½" - 3"



Cast Iron
SS Trim
Steam (3% or 10% accum.)
or Air Service
Type 301
Threaded or Flanged
Sizes 1½" x 2½" - 8" x 8"



Bronze or Cast Iron
Bronze or SS Trim
Globe or Angle Pattern
Steam, Air, Gas, or Liquid
Type 135
Threaded or Flanged
Sizes ¾" - 8"



Cast Iron
Drip Pan Elbow
Style DPE
Threaded or Flanged
Sizes ¾" - 10"
*6" & 8" elbows have 125# Flanges

Back Pressure & Relief Valves